

SHINAGAWA

Inquiries:
Strategy Public
Relations Section
Tel: 5742-6612
Fax: 3777-8080

Edited and Published by the Shinagawa City Office (2-1-36 Hiromachi, Shinagawa-ku, 140-8715)



張 曉靜

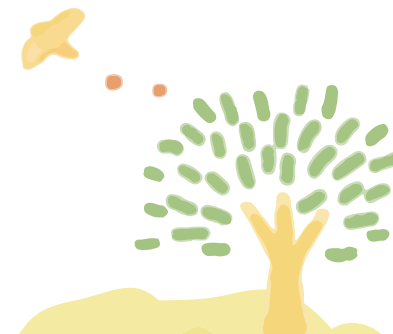
Little Girl, Big Dreams
Oi Central Seaside Park (4-1 Yashio)

Photo Art Award



Flowers and Greenery Award

Masaki Nishiyama
Immersed in Seasonal Colors
Higashi-Shinagawa Sea Park
(3-9 Higashi-Shinagawa)



Co-organizer: Nihon Taiiku
Shisetsu Co., Ltd.
Sponsors: Nikon Corporation Oi
Factory, Shinagawa
Aquarium
Support: Digital Camera
Volunteer Association



Park Photo Grand Prize

Yuki Kitahara
Let's go!

Shinagawa Central Park (In front of City Office)

Fortieth Anniversary of the Shinagawa Declaration of a Non-Nuclear Peace Area

Shinagawa "Park Photo Contest 2024"—The Winning Entries

Shinagawa City organizes an annual photo contest to increase residents' fondness for the greenery, flowers and other attractions of Shinagawa's parks through photography. Last year, we called for entries from June 1 and received 127 submissions.

A panel of judges including professional photographers reviewed each entry on a number of criteria, including the skill of the photographer and how well each image captured their affection for the park where it was taken. The following photographs were selected as 2024's winners.



Smiling Kids Award

Noboru Tatsumi
Reach for the Sky!
Minatogaoka Terminal Park (3-1 Yashio)



Shinagawa Aquarium Award

Chika Unno
Feeling Like a Fish
Shinagawa Aquarium (within Shinagawa-
kumin Park, 3-2-1 Katsushima)



Smartphone Award

Mariko Wada
Meeting a Dinosaur
Kodomo-no-mori Park (3-10 Kita-Shinagawa)



Honorable Mention

Akane Yamamoto
I Love Water and Grandpa!
Higashi-Shinagawa Sea Park



Honorable Mention

Keiko Suzuki
Togoshi Park in Winter
Togoshi Park (2-1 Yutakacho)



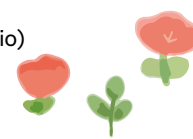
Honorable Mention

Kana Kotera
You Finally Reached the Orange One!
Shinagawa Central Park



Honorable Mention

Hiroyuki Okita
Two Hundred Shades of Jade
Oi Green Way
(4- and 5-chome Yashio)



Inquiries: Shinagawa Central Park administration office (Tel: 03-5740-5037), Parks Section (Tel: 03-5742-6789, Fax: 03-5742-9127)

Population As of February 1, 2025 ● Japanese Residents 395,752 (Men 193,614 Women 202,138) ● Foreign Residents 17,078 (Men 8,672 Women 8,406)

Publication of City News Shinagawa and Its Distribution via Catalog Pocket End

● City News Shinagawa

This is the final issue of *City News Shinagawa*, which we have published on the tenth of every month (except for August) until now.



● Catalog Pocket

As of Monday, March 31, we will no longer be distributing City News Shinagawa (in ten languages) on the free app Catalog Pocket.

- From April, Shinagawa City’s newsletter, *Koho Shinagawa*, will be available in 131 languages via machine translation on the city’s website. Please check it out!



You can find our newsletter, *Koho Shinagawa*, on the city website here.

Inquiries: Strategy Public Relations Section (**Tel:** 03-5742-6644, **Fax:** 03-5742-6870)

Household Bulky Waste, Such as Furniture, Is Collected on an Appointment Basis for a Fee (This service is not for industrial waste.)

Bulky waste refers to pieces of household waste of any dimension that exceeds approximately 30 cm. During moving season, many people make appointments to have their bulky waste collected, and sometimes it may take longer for your item to be collected. Please make an appointment as soon as possible.

Application: Call the Shinagawa City Bulky Waste Application Center or apply over the Internet.

Tel: 03-6733-5374 (Monday through Saturday and national holidays, 8:00 a.m. to 7:00 p.m.)

Website: <https://shinagawa-sodai.com/>

Note: TVs, refrigerators, freezers, washing machines, clothes dryers, air conditioners and personal computers cannot be collected as bulky waste.

- If you apply for collection over the Internet, you can pay by credit card. Please visit the Shinagawa City website for more details.
- To have your TV, refrigerator, freezer, washing machine, clothes dryer or air conditioner collected, please ask the shop where you bought it, the shop where

you are buying a replacement or the Electric Appliance Recycling Reception Center (**Tel:** 0570-087-200).

- To have your PC collected, please contact the manufacturer. If you do not know the manufacturer of your computer, please call the PC3R Promotion Association, **Tel:** 03-5282-7685, **URL:** <https://www.pc3r.jp>. You can also have ReNet Japan Recycle (**Tel:** 0570-085-800; **URL:** <https://www.renet.jp/>) collect your PC from your home.
- Specialized disposal companies will handle hazardous and poisonous items, fireproof safes, etc. For more information, please contact the Shinagawa Waste Collection Office.

Inquiries: Programs Subsection, Shinagawa Waste Collection Office (**Tel:** 03-3490-7051, **Fax:** 03-3490-7041)

Notice regarding Dog Registration and Periodic Group Rabies Vaccination

Dogs ninety-one days old or older are required by law to be registered once in their lifetime, and to get a rabies shot once a year.

● Registration

If you purchase a dog at a pet shop or from a breeder or take ownership of a microchipped dog, you must register or renew your pet’s microchipped information. Please register the new owner’s information and complete the designated procedures on the Ministry of the Environment database (<https://reg.mc.env.go.jp>) based on the registration certificate you received with your dog.

Other issues:

- Please complete the designated procedures in the Ministry of the Environment database if you move to another location or if your dog dies
- It is strongly recommended to implant a microchip in dogs you already own
- If your dog is not yet microchipped, you must complete registration procedures at the Shinagawa City Office service counter (registration fee: ¥3,000)
- If your dog is already registered in the Ministry of the Environment database and a problem arises, please contact the Microchip Information Registration Service Counter (**Tel:** 03-6384-5320).

● Periodic Group Rabies Vaccination

According to the Rabies Prevention Act, dog owners must have their pets

vaccinated annually to prevent rabies. Periodic group vaccinations will be conducted at fourteen designated veterinary hospitals in Shinagawa City.

Dates: April 1 (Tue.) through 30 (Wed.)

Notes:

1. Since the hours of these locations vary, please check the website or bulletins of the veterinary hospital you plan to use.
2. If you cannot bring your pet in for this vaccination within the designated period, please do so at a veterinary hospital and complete the application procedures to receive a vaccination completion slip at the Shinagawa City electronic application service or one of the following places—the Public Hygiene Section (Hon Chosha 7F), Shinagawa or Ebara Health Service Center—or at your local community center no later than Monday, June 30.

Eligibility: Dogs ninety-one days old or older registered in Shinagawa City

Fee: ¥3,750 (vaccination fee/vaccination tag issuance fee)

Notes:

1. If you have your dog vaccinated on a day outside of the designated period, the fees may be different.
2. A separate initial fee may be charged.

Inquiries: Public Hygiene Section (**Tel:** 03-5742-9132, **Fax:** 03-5742-9104)

Shinagawa City Website

You can view the Shinagawa City website in 131 languages—including English, Chinese (simplified characters and traditional characters) and Korean—using an automatic translation service.



Inquiries: Strategy Public Relations Section
(**Tel:** 03-5742-6612, **Fax:** 03-5742-6870)

((InterFM 89.7 MHz))

Shinagawa Info

Multilingual FM City News Broadcasts

The city government broadcasts *Shinagawa Info*, a 3-minute municipal news program, in several languages on InterFM897 (89.7 MHz) from 6:56 a.m., Monday through Friday.

The languages broadcast are as follows:

- | | |
|---|--|
| Mondays: Chinese and Japanese | Thursdays: English and Japanese |
| Tuesdays: Korean and Japanese | Fridays: English and Japanese |
| Wednesdays: Tagalog and Japanese | |

In addition to daily-living information, emergency information is broadcast during times of emergency. You can also check the broadcast content via the website.

Website: <https://www.interfm.co.jp/timetable/>