

SHINAGAWA

Inquiries: Public Relations Section
Tel: 5742-6612
Fax: 3777-8080

Edited and Published by the Shinagawa City Office (2-1-36 Hiromachi, Shinagawa-ku, 140-8715)

Child Protection System: Mamorucchi

—Let's Protect
Children Together—

Mamorucchi is an anti-crime child protection system designed to create a safer and more peaceful community where people support one another and help each other.

While this system does not guarantee it will ward off criminals or safeguard children, it encourages everyone in the community to watch over children and protect them—especially in an emergency—and investigate the situation and circumstances.

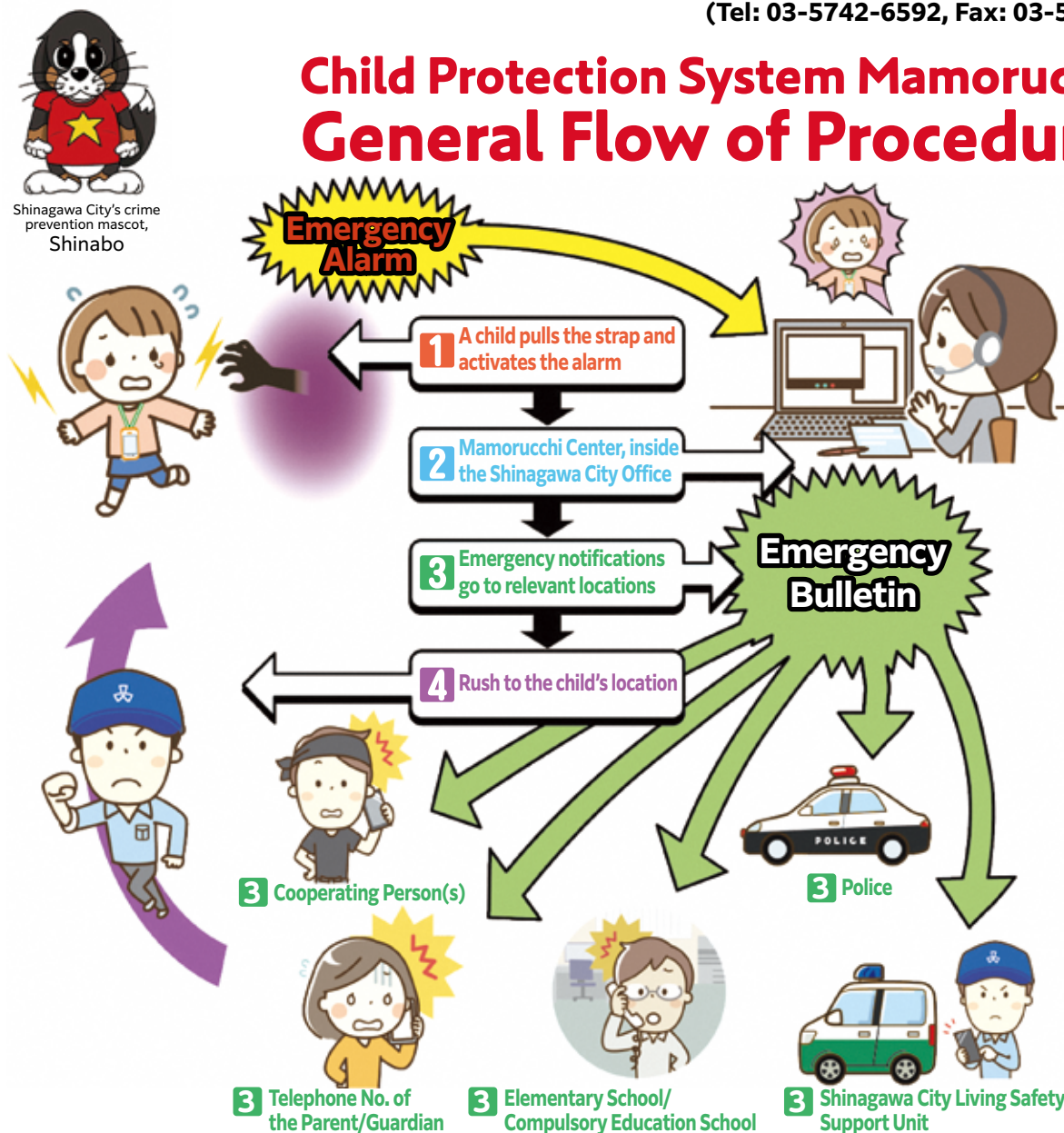
Note: Operators speak only Japanese.

Inquiries: Section Chief in charge of Security in
Everyday Life, Community Promotion Section
(Tel: 03-5742-6592, Fax: 03-5742-6878)

For more information,
please visit the
Shinagawa City website



Child Protection System Mamorucchi: General Flow of Procedures ▶▶▶▶▶



1 When he/she feels a sense of danger, a child can alert the Shinagawa City Office Mamorucchi Center by pulling the Mamorucchi safety alarm strap.

2 Mamorucchi makes hands-free communication with the Mamorucchi Center possible, and the situation can be investigated.

3 If it is determined that an emergency exists, the appropriate entities—such as the Living Safety Support Unit, parent/guardian, school, police, and cooperating persons—can be contacted as necessary.

4 The contacted entities will rush to the child's side and investigate the situation and circumstances.

Mamorucchi Rental Applications for New First-Graders in FY2024 Being Accepted

Mamorucchi safety alarm straps can be rented out to families with children born between April 2, 2017 and April 1, 2018 who live in Shinagawa City and are going to enter the first grade of elementary school at a private school, public school or international school.

Application: Please bring documentation certifying school entrance (a photocopy is acceptable) to the Community Promotion Section (Shinagawa City Office Dai-ni Chosha 6F; Tel: 03-5742-6592, Fax: 03-5742-6878) by Thursday, February 29.

Notes:

1. When you apply, you must register three emergency contact numbers (mobile phone number or mobile phone email address).
2. If your child is entering a Shinagawa municipal elementary school or compulsory education school (primary education section), please apply at the school he/she will attend.
3. You can download the registration form from the Shinagawa City website and mail in your completed form.

For more information,
please visit the
Shinagawa City website



Mamorucchi Application Reception Site

Starting from April, the Shinagawa City electronic application service will accept various applications related to Mamorucchi such as change of address, breakage or loss.

Details will be announced via the Shinagawa City website.

About Cooperating Persons— Community Members Who Watch Over Children

Parents, guardians and local community members are being asked to become cooperating persons, watching over other children while watching over their own children.

For more information, please visit the Shinagawa City website.

Now Accepting Declarations for Special City Resident's Tax/ Metropolitan Resident's Tax

The submission period for resident's tax in FY2024 is as follows. Please submit your application by postal mail whenever possible.

Dates: February 16 (Fri.) through March 15 (Fri.), 8:30 a.m. to 5:00 p.m.

Notes:

1. Excludes Saturdays and national holidays
2. Open until 7:00 p.m. on Tuesdays

Location: Meeting Room 141, Shinagawa City Office (Hon Chosha 4F)

Note: Returns are also accepted at the Tax Section service counter (Hon Chosha 4F) from 5:00 to 7:00 p.m. on Tuesdays and from 8:30 a.m. to 5:00 p.m. on Sundays.

Eligibility: You must be a Shinagawa City resident as of January 1, 2024 who has not submitted an income tax return to the tax office and meet any of the following requirements:

- Did not have any income during the period between January 1 and December 31, 2023, and was not reported as a spouse eligible for tax deductions, a person of the same livelihood, or a dependent of a Shinagawa City resident taxpayer.
- Had an income during the period between January 1 and December 31, 2023 other than a salary or pension.
- Had an income during the period between January 1 and December 31, 2023, but your employer has not submitted a salary payment report to Shinagawa City.

- FY2024 special city resident's tax/metropolitan resident's tax report forms were mailed on February 2 (Fri.), based on records for the previous year. If you have not received a form and need one, please contact the office below.

- You cannot obtain a tax payment/taxation/tax exemption certificate unless you file an income report. Not filing an income report can also affect the calculation of your National Health Insurance premiums and the use of other administrative services.

Precautions about Tax Revisions

Starting from January 2023, to claim dependents who are between 30 and 69 years of age and live outside of Japan, you must meet at least one of the following requirements:

1. Dependent must not have an address or place of residence within Japan due to study abroad
(A copy of the equivalent of a visa or residence card in foreign countries must be submitted)
2. Dependent is disabled
3. Dependent received ¥380,000 or more from you for livelihood or education expenses (remittance certificate references must be submitted)

Inquiries: Unit in charge of Taxation, Tax Section (Tel: 03-5742-6663 to 6666, Fax: 03-5742-7108)

Shinagawa-ku International Friendship Association Japanese-Language Classes

Courses: 1) Part 1 is for those who have never studied Japanese before (morning, afternoon and evening classes). 2) Part 2 is for those who already understand the content of Part 1 (afternoon and evening classes). 3) Part 3 is for those who have studied the content of Part 1 and Part 2 or other similar contents (afternoon and evening classes).

Dates and times: 1) and 2) Tuesdays and Thursdays, from April 16 through June 27, excluding April 30, May 2.

3) Mondays and Wednesdays, from April 17 through July 1, excluding April 29, May 1 and 6.

Total 20 classes

Morning class: 10:00 a.m. to noon; afternoon class: 1:30 to 3:30 p.m.; evening class: 6:30 to 8:30 p.m.

Eligibility and capacity: Sixteen foreign residents per course (on a first-come, first-served basis)

Note: Application will be accepted according to the order tuition payments are made.

Babysitting service: From around two years of age up to elementary school entrance; two children only in each morning, afternoon and evening class. (on a first-come, first-served basis)

Note: ¥5,000 per child during the period mentioned

Tuition: ¥7,000 per course (textbook fee included)

Location/application/inquiries: Please fill out the application form on SIFA's website, or send a postcard. Please include the name of the class you wish to join (the course and time), your address, name with *furigana*, age, gender, daytime phone no. and nationality. If you are a student in Shinagawa City, please include the name of the school. If you work in Shinagawa City, please include the name of your place of employment.

(Address: Shinagawa City Office Dai-san Chosha 4F, 2-1-36 Hiromachi, 140-0005, Tel: 03-5742-6517, Fax: 03-5742-6518, Website: <https://www.sifa.or.jp/>)

Oi Daisan Community Center and Kumin-Shukaijo Will Move on February 26

The Oi Daisan Community Center will be open at its current location until Thursday, February 22, and Kumin-shukaijo until Wednesday, January 31.

Although we know this relocation will cause some inconvenience, we would appreciate your understanding and cooperation.

New location: 2-10-3 Nishi-Oi

Inquiries: Oi Daisan Community Center
(Tel: 03-3773-2000, Fax: 03-3771-3735)

Note: The phone and fax numbers will remain the same.

About COVID-19 Vaccinations

(information current as of January 26)

2023 Autumn Vaccinations End Next March 31

Eligibility: Everyone who is at least six months of age and has received the initial vaccinations.

Locations: Hospitals and clinics in Shinagawa City

Vaccine: Vaccine for omicron variant (XBB.1.5)

Vaccination fee: Free

Concerning Vaccination Tickets

Tickets are being mailed out to residents who do not have any unused vaccination tickets. If you have unused vaccination tickets, you will not receive any more, since the unused ones are still valid.

Please note that if you have lost your vaccination ticket or recently moved into Shinagawa City, you must complete application procedures.

Note: If you have not completed your initial vaccinations, you can do so until Sunday, March 31, 2024.



For more information, please visit the Shinagawa City website.

Inquiries: Unit in charge of COVID-19 Vaccination, Health Care and Disease Prevention Section, Tel: 03-5742-7846, Fax: 03-5742-6012

Tokyo Multilingual Coronavirus Hotline

Consultation services are available to answer your questions about lifestyles, health, and any concerns regarding the spread of the coronavirus.

Languages: Twelve (Japanese, English, Chinese, Korean, Vietnamese, Nepali, Tagalog, Thai, Portuguese, Spanish, French and Burmese)

Tel 0120-670-440

Hours 24 hours
(also available on Saturdays, Sundays and national holidays)

Shinagawa Info

Multilingual FM City News Broadcasts

The city government broadcasts *Shinagawa Info*, a 3-minute municipal news program, in several languages on InterFM897 (89.7 MHz) from 6:56 a.m., Monday through Friday.

The languages broadcast are as follows:

Mondays: Chinese and Japanese **Thursdays:** English and Japanese
Tuesdays: Korean and Japanese **Fridays:** English and Japanese
Wednesdays: Tagalog and Japanese

In addition to daily-living information, emergency information is broadcast during times of emergency. You can also check the broadcast content via the website.

Website: <https://www.interfm.co.jp/timetable/>